

# SLALOM - VI

## 3 FOR 1

3 BOARD SIZES TO CHOOSE FROM - PER RIDER



Photo: PWA / John Carter

**56 - 65 - 76 / 59 - 68 - 82**

# SLALOM - VI

## 3 FOR 1

3 board sizes to choose from - per rider

56, 65, 76 for Small, Medium and Large Riders

59, 68, 82 for XLarge, XXXLarge and XXXLarge Riders

JP and Antoine revolutionize Slalom sailing by introducing an all new 2 Slalom board line concept with only 3 boards per line.

With his Werner Gnigler shaped Generation V JP Slalom boards Antoine has dominated the Slalom discipline in 2009 like never before. He had won 5 out of 6 PWA Slalom events with Sylt still to happen in late September. After only 5 events he had done enough to secure his Slalom title for 2009. Antoine managed to win these events in a huge wind spectrum from absolutely nuclear winds in Pozo, Gran Canaria to really light and gusty winds in Korea.

Micah Buzianis who developed the Generation V Slalom boards together with Werner, currently sits in 3rd position overall, even though he missed the first event of the year in Austria due to a broken leg. He looks forward to the event in Sylt which he has won before.

In 2009 the PWA started the new 63 Format for Slalom. 63 means that riders need to register 3 production boards (and 6 sails) at the first event of the year and they are only allowed to use those 3 boards for the whole tour.

Werner started to work with Micah Buzianis, Robby Swift, Enes Yılmaz (2008 and 2009 Youth World Champion), and Antoine on the Slalom Generation VI already in March 2009.

Very soon it was clear that the two big guys (Antoine 186cm, 100kg and Micah 188cm 99kg) need completely different boards to the two smaller guys (Robby 176cm, 84kg and Enes 181cm, 80kg).

This was kind of an eye opener to the whole JP crew as it became clear that it was easily possible to provide the perfect 3 sizes for every rider with only six boards. This will obviously also make it much easier for national racers and people who simply enjoy sailing on Slalom gear to choose the perfect JP board(s) for themselves as they only need to choose between 3 boards.

While other brands offer up to 9 Slalom board sizes and some of them even in two technologies (how do you know which one is right for you?) JP now offers 3 board sizes per rider size.

All you need to know is your personal measurements and which sail sizes you are using.

Board	56		65		76	
	width	volume	width	volume	width	volume
S, M and L Riders <85kg, <185cm	56	81	65	101	76	121
sail sizes	4,7 - 6,2		6,2 - 7,8		7,0 - 9,5	

Board	59		68		82	
	width	volume	width	volume	width	volume
XL, XXL and XXXL Riders >85kg, >185cm	59	92	68	112	82	132
sail sizes	5,5 - 7,0		7,0 - 8,6		7,8 - 10,0	

**56 - 65 - 76 / 59 - 68 - 82**

# SLALOM - VI

## SHAPE

On the smaller sizes control is the biggest factor to go really fast. That is why we used a bottom shape combining double concaves in the front with a flat V in the tail. This gives you great control and enables you to go superfast even when totally maxed out.

The bigger sizes have a constant flat V throughout. This creates good lift and a very direct feeling which gets you planing in very light winds – even in the middle of the pack.

## OUTLINE

Big changes took place in the outline. We straightened the curve between the straps and used a wider tail. This makes the boards ride much more stable (better control) and allows the rider to have a more parallel stance on the board – which is more comfortable and thus makes it possible to go faster.

## CUT-OUT

The increased control and stability of the boards allowed us to have bigger CUT-OUTs on the tail which gives the boards better release and consequently more top speed.

## RAIL SHAPE

Lots of tuning went into the rail shape. A comfortable stance is a key factor – especially for long high speed runs.

Normal slalom board rails offer a shoulder which nicely fits to the arch of your foot but then the rail runs into a flat deck which often makes it difficult to really push and at the same time stay in the straps. Many riders often complain that they really need to lift up their toes to stay in the straps which can become very hard on your legs.

## IMPORTANT TECHNICAL INFORMATION:

JP Boards with TuttleBoxes can be used with 'normal' JP Tuttle fins (with JP 35mm screws: JS0TBS30), but NOT with Deep Tuttle fins.

JP Boards with Deep TuttleBoxes can be used with

ALL JP Tuttle fins with

- 35mm fin screws (JS0TBS30) for JP Deep Tuttle fins.

- 50mm fin screws (JS0PBS50) for normal JP Tuttle fins.

This is why we came up with our new RACE DECK.

The RACE DECK offers a raised area underneath your forefoot and toes which provides unknown comfort and control when going at full speed. You easily stay connected to the deck no matter how strong the wind gets. You never feel like you are getting pulled out of your straps and need to bend up your toes to stay in the straps. The raised area is part of the board and not just a footpad as very thick footpads tend to make it rather difficult to get out of the straps once you have really pushed yourself in. You need to try this new RACE DECK to believe its advantages. Antoine and the rest of the team would never want a slalom board without it again.

The Generation VI also comes again (just like the Generation V) with rather full rails which makes it easier to stay on the plane around the marks and is great for immediate acceleration after the jibe. This is especially important in the middle and nose area of the board as it avoids sinking when jibing. Those rails were one of Antoine's secrets on the race course in 2009 -apart from his exceptional talent- but it was obvious that he won many races by overtaking his opponents around the marks. He would sometimes overtake 3-4 people on one mark as he hardly lost any speed and immediately accelerated to full speed again while the others struggled to stay on the plane.

## BOARD/FIN/SAIL RECOMMENDATION CHART

Boards:			SLALOM - VI					
Size	Length	Area (cm <sup>2</sup> )	54	65	76	59	68	82
race sails			<6,2	6,2 - 7,8	7,0 - 9,5	5,5 - 7,0	7,0 - 8,6	7,8 <
TuttleBox Fins								
SLALOM III								
28	11,0"	190	<5,5			28		
30	11,8"	211	5,1 - 6,2			30	5,5 - 6,2	
32	12,6"	230		6,2		32	5,5 - 6,7	
34	13,4"	248		6,2 - 7,0		34	6,7 - 7,0	
36	14,2"	265		7,2 - 7,0		36	7,0	6,7 - 7,0
38	15,0"	304		7,0 - 7,8		38		7,0 - 7,8
40	15,8"	330		7,8		40		7,8 - 8,6
42	16,5"	349			7,0	42		8,6
44	17,3"	368			7,0 - 7,4	44		8,6
46	18,1"	387			7,8 - 8,5	46		7,8 - 8,6
48	18,9"	405			8,5 - 9,5	48		7,8 - 9,5
50	19,7"	425			9,5	50		8,6 - 9,5
52*	20,5"	443				52		9,0 <

\* = Deep TuttleBox Finbase

**56 - 65 - 76 / 59 - 68 - 82**

# SLALOM - VI



FOR S, M, L - RIDERS



## PRO EDITION

Code	Boardname cm / ft.	Length cm / inch	Width Liters	Vol. kg / lbs	W.(+/- 6%)	Fin Box	Fin	Sail Recomm. Race / ideal
JBOSL56P	Slalom-VI 56 PRO	235 / 7'9"	56 / 22,0"	81	t.b.c.	TB	no fin	4,7-6,2
JBOSL65P	Slalom-VI 65 PRO	235 / 7'9"	65 / 25,6"	101	t.b.c.	TB	no fin	6,2-7,8
JBOSL76P	Slalom-VI 76 PRO	235 / 7'9"	76 / 29,9"	121	t.b.c.	DTB	no fin	7,0-9,5
Technology Finish	Pro Edition in Carbon Wood Technology Super Limited Silver Finish							

Board comes with: 4 foot straps with screws, screwdriver, TuttleBox-Screws, JP sticker set, accessory bag

TB = Tuttle Box; DTB = Deep Tuttle Box

# 56 - 65 - 76

# SLALOM - VI



FOR XL, XXL, XXXL - RIDERS



## PRO EDITION

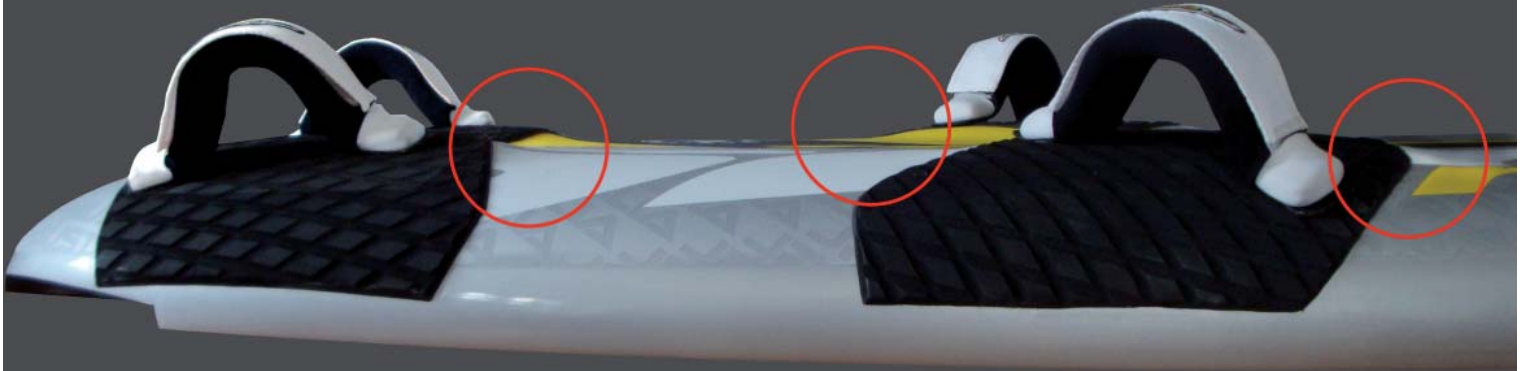
Code	Boardname cm / ft.	Length cm / inch	Width Liters	Vol. kg / lbs	W.(+/- 6%)	Fin Box	Fin	Sail Recomm. Race / ideal
JBOSL59P	Slalom-VI 59 PRO	235 / 7'9"	59 / 23,2"	92	t.b.c.	TB	no fin	5,5-7,0
JBOSL68P	Slalom-VI 68 PRO	235 / 7'9"	68 / 26,8"	112	t.b.c.	TB	no fin	7,0-8,6
JBOSL82P	Slalom-VI 82 PRO	235 / 7'9"	82 / 32,3"	132	t.b.c.	DTB	no fin	7,8-9,5 (10)
Technology Finish	Pro Edition in Carbon Wood Technology Super Limited Silver Finish							

Board comes with: 4 foot straps with screws, screwdriver, TuttleBox-Screws, JP sticker set, accessory bag  
TB = Tuttle Box; DTB = Deep Tuttle Box

# 59 - 68 - 82

# ***SLALOM - VI***

***RACE DECK***



***RACE DECK***